



**Image Gallery now has the ability to communicate directly with Astra Tech's Atlantis technology using the Lava Scan ST Design System. The result is an abutment with outstanding function and esthetics.**

**This new development will enable Lava Scan ST users to transfer digitally scanned information of patients' oral geometry to Astra Tech's Atlantis design and manufacturing facilities. This eliminates the need to, and lowers the cost of, shipping physical models. In addition, this connectivity reduces the overall turn around time for the abutment. ~~~~ key benefit to your client.**

**When it comes to cement-retained restorations and patient-specific abutments the combination of Atlantis™ and Astra Tech Implant System™ is unbeatable. You will get all the benefits of Astra Tech BioManagement Complex™ along with the outstanding esthetics and perfect fit of Atlantis patient-specific abutments. Astra Tech BioManagement Complex consists of four interdependent features that all work together to maintain healthy hard and soft tissue: OsseoSpeed™, MicroThread™, Conical Seal Design™ and Connective Contour™. Atlantis abutments for the Astra Tech Implant System are designed to fully incorporate the features and benefits of the Conical Seal Design and Connective Contour.**

### **Conical Seal Design™ – a strong and Stable fit**

THE CONICAL SEAL DESIGN IS A CONICAL CONNECTION BELOW THE MARGINAL BONE LEVEL THAT TRANSFERS THE LOAD DEEPER DOWN IN THE BONE. COMPARED TO CONICAL CONNECTIONS ABOVE THE MARGINAL BONE LEVEL AND FLAT-TO-FLAT DESIGNS, CONICAL SEAL DESIGN REDUCES PEAK STRESSES AND THEREBY PRESERVES THE MARGINAL BONE. IT ALSO SEALS OFF THE INTERIOR OF THE IMPLANT FROM

### **Connective Contour™ – increased soft tissue contact zone and volume**

THE CONNECTIVE CONTOUR IS THE UNIQUE CONTOUR THAT IS CREATED WHEN YOU CONNECT THE ABUTMENT TO THE IMPLANT. THIS CONTOUR ALLOWS FOR AN INCREASED CONNECTIVE SOFT TISSUE CONTACT ZONE BOTH IN HEIGHT AND VOLUME, WHICH INTEGRATES WITH THE TRAN MUCOSAL PART OF THE IMPLANT, SEALING OFF AND PROTECTING THE MARGINAL BONE.

### **Atlantis™ abutments – as individual as your patients**

WITH ASTRA TECH IMPLANT SYSTEM™ YOU ALREADY HAVE THE PERFECT IMPLANT ABUTMENT CONNECTION. THROUGH THE ATLANTIS™ SOPHISTICATED DESIGN SOFTWARE AND ADVANCED TECHNOLOGY, IMAGE GALLERY IS ABLE TO TAKE ESTHETICS AND INDIVIDUAL SOLUTIONS TO A COMPLETELY NEW LEVEL.

**Combine this with Image Gallery's expertise in material selection; Lava™ over Custom Titanium Abutment, Custom Zirconia Abutment with Noritake Pressed Ceramics, or Porcelain Fused to Metal Crown. We will design the abutment and core and porcelain to function properly as well as be extremely aesthetic.**

- Outstanding function and esthetics – as close to natural prepped teeth as you can get
- Simple restorative procedure with reduced chairtime – just take an impression and send it to your dental laboratory
- Eliminates the need for inventory of stock abutments
- Platform independent and available in the materials you want

**Freedom** Experience the freedom of unlimited possibilities for cement-retained implant prosthetics. Available in titanium, gold-shaded titanium and zirconia, Atlantis™ abutments are available for most major implant systems.

**Esthetics** Because each Atlantis abutment is designed from the final desired tooth shape it provides optimized functional and esthetic results. Each abutment is designed to be anatomically correct and specific to the unique space it will fit.

**Simplicity** Take an implant-level impression and send it to your dental laboratory without spending valuable time on abutment selection or ordering parts. Atlantis abutments eliminate the need for chairside modification and can correct variations in implant angle, depth and rotation.



Atlantis™ abutment in zirconia is perfect for challenging cases in the esthetic zone and is strong enough to be used in all positions in the mouth.



Atlantis™ abutment in titanium, for all positions in the mouth.

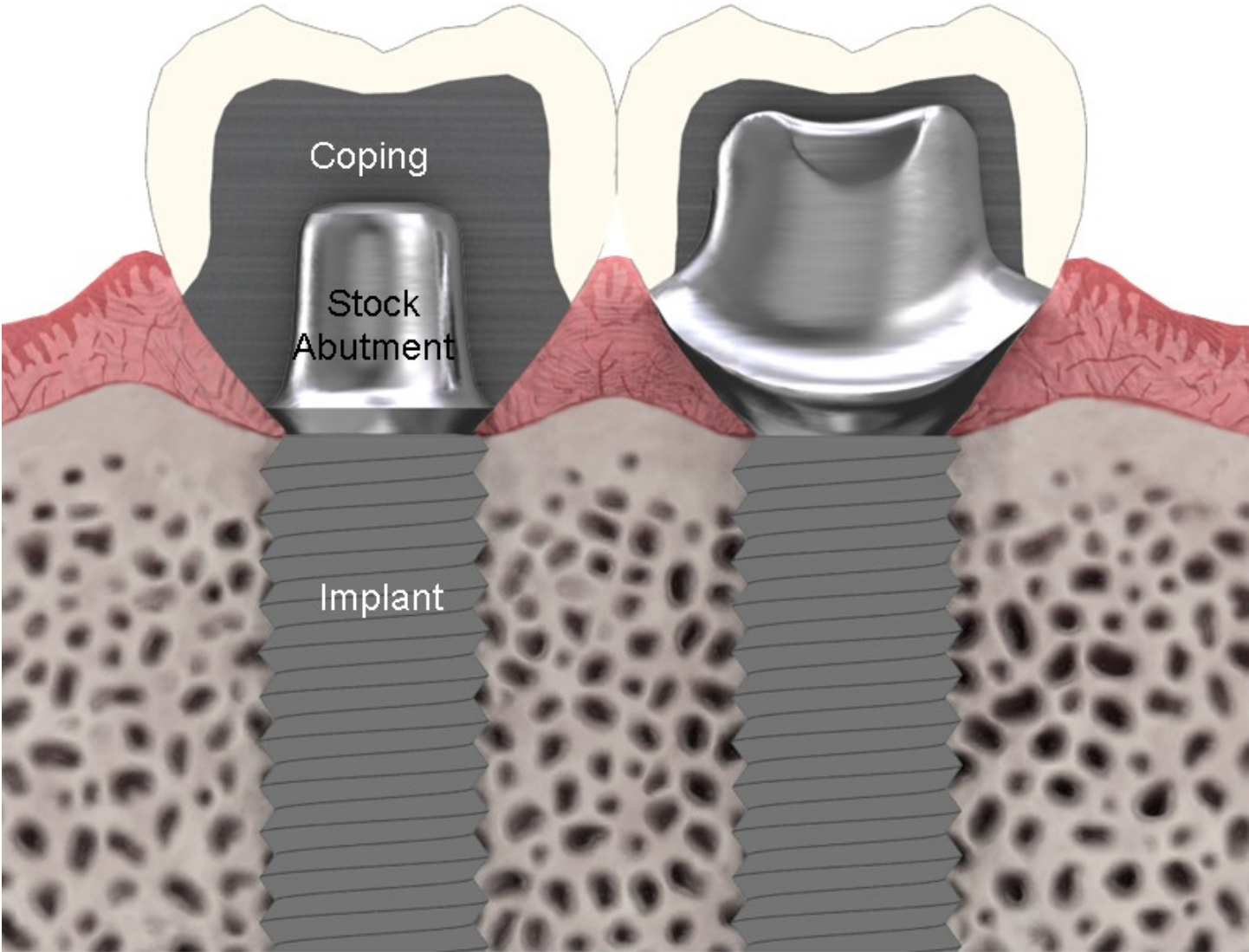


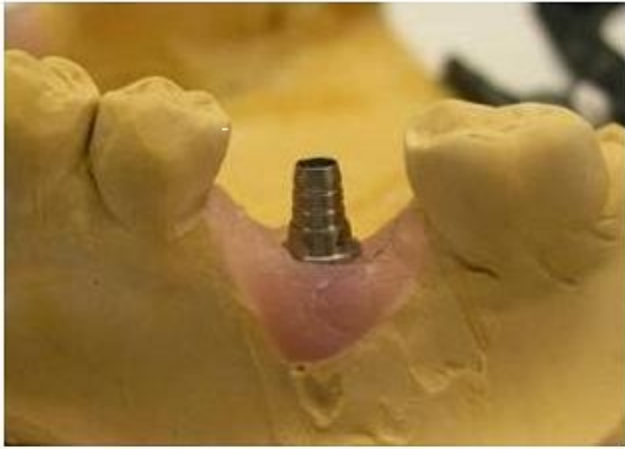
Atlantis GoldHue™ abutment is made of titanium with a gold-shade achieved through a thin coating of biocompatible titanium nitride (TiN), to provide a warm, esthetic tone under the gingiva for a natural result. Suitable for all positions in the mouth.



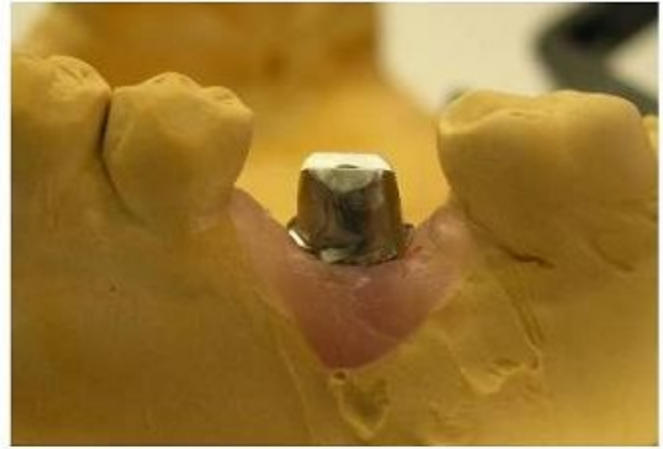
Atlantis™ abutments are not only individually designed and produced for the specific space it will fit, but also in relation to each other for optimal result when creating full jaw or multiple unit restorations.

Courtesy of Dr. Julian Charko.





Stock Abutment



Atlantis Abutment



*Atlantis abutments fill the space properly allowing the coping and porcelain to have correct support.*

# Design Options

Medium sized healing situation

Full anatomical dimension

Contour soft tissue

Support soft tissue

No tissue displacement

